



# Energy Consumption Report

Comprehensive Overview  
2024

Powering Progress: Sustainable Energy for a Healthier Future at Stevenson Memorial Hospital

# Executive Summary

01

This energy report provides an overview of the energy initiatives at Stevenson Memorial Hospital, highlighting our commitment to sustainability and energy efficiency in the upcoming hospital build. In 2025, we are embarking on a new construction project for a state-of-the-art facility, which will wrap around our current hospital building. It is designed to meet both the growing healthcare needs of our community and our environmental responsibilities.

Our vision for the new hospital is centered around achieving a significant reduction in energy usage while maintaining high standards of patient care and comfort. To this end, we will be integrating cutting-edge energy-efficient technologies and sustainable building practices throughout the design, construction, and operation phases.



Key strategies include the use of advanced HVAC systems, energy-efficient lighting, smart building technologies, and renewable energy sources, where feasible. The building will also feature high-performance insulation and energy-efficient windows to reduce heating and cooling demand. Additionally, we will prioritize building materials with lower environmental impact, focusing on reducing carbon footprints and waste.

By implementing these energy-saving measures, Stevenson Memorial Hospital is not only aiming for cost-effective operations but also reinforcing our commitment to sustainability and environmental stewardship. This energy-conscious approach aligns with our broader goals to minimize operational costs, reduce environmental impact, and contribute to a greener future for our community. We are excited about the progress and are dedicated to making every effort to ensure energy efficiency is at the core of our new hospital's design and operations.

# Table of Contents



<b>Executive Summary</b> .....	01
<b>Introduction</b> .....	03
<b>Regulatory Update</b> .....	04
<b>2022-2024 Monthly Electrical Usage</b> .....	05
<b>2022-2024 Natural Gas Usage</b> .....	07
<b>Closing Statement</b> .....	08





# SMH Introduction



To fully realize the benefits of energy management and enhance our conservation efforts, a strategic approach is essential. At Stevenson Memorial Hospital, we are committed to integrating energy management into our daily practices, carefully considering factors like indoor environmental quality, operational efficiency, and the use of sustainably sourced resources when making financial decisions.

As a key member of the Northern York South Simcoe Ontario Health Team (OHT), Stevenson Memorial Hospital works in collaboration with other hospitals to optimize efficiencies, reduce costs, and ensure that the community has access to the healthcare services they need. By working together, we can improve patient outcomes, promote health education, and maintain regional access to vital health services.

## Our Mission:

Promising Progress,  
Pursuing Perfection

## Our Vision:

Setting a New Standard for  
Community Hospital Care

## Our Values: I.C.A.R.E.

**INTEGRITY:** We adhere to the highest ethical principles.

**COMPASSION:** We respond to our patients' needs with empathy.

**ACCOUNTABILITY:** We are accountable to one another and to our community.

**RESPECT:** We embrace the diversity of our patients, staff and community.

**EXCELLENCE:** We support a culture of distinction.

# Regulatory Update

04

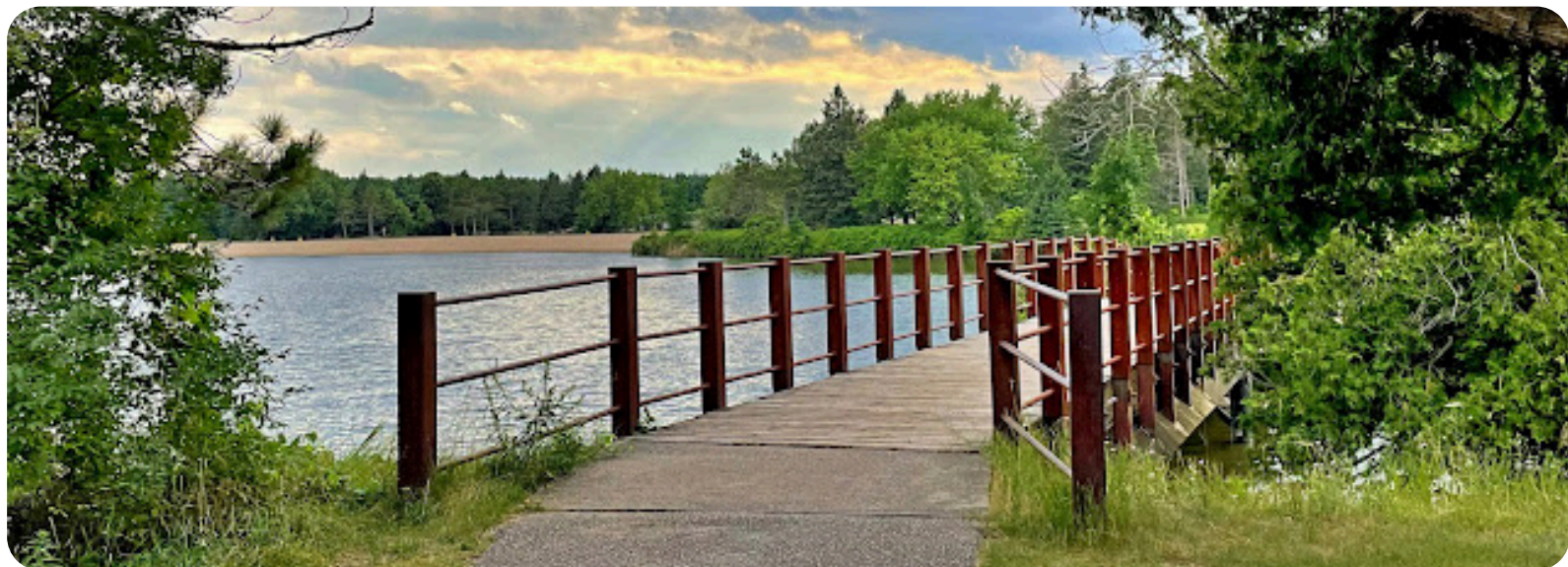


O. Reg. 397/11: Conservation and Demand Management Plans was introduced in 2013. Under this regulation, public agencies were required to report on energy consumption and greenhouse gas (GHG) emissions and develop Conservation and Demand Management (CDM) plans the following year.

Until recently, O. Reg. 397/11 was housed under the Green Energy Act, 2009 (GEA). On December 7, 2018, the Ontario government passed Bill 34, Green Energy Repeal Act, 2018. The Bill repealed the GEA and all its underlying Regulations, including O. Reg. 397/11. However, it re-enacted various provisions of the GEA under the Electricity Act, 1998.

As a result, the conservation and energy efficiency initiatives, namely CDM plans and broader public sector energy reporting, were re-introduced as amendments to the Electricity Act. The new regulation is now called O. Reg. 507/18: Broader Public Sector: Energy Conservation and Demand Management Plans (ECDM).

As of January 1, 2019, O. Reg. 397/11 was replaced by O. Reg. 507/18, and BPS reporting and ECDM plans are under the Electricity Act, 1998 rather than the Green Energy Act, 2009.





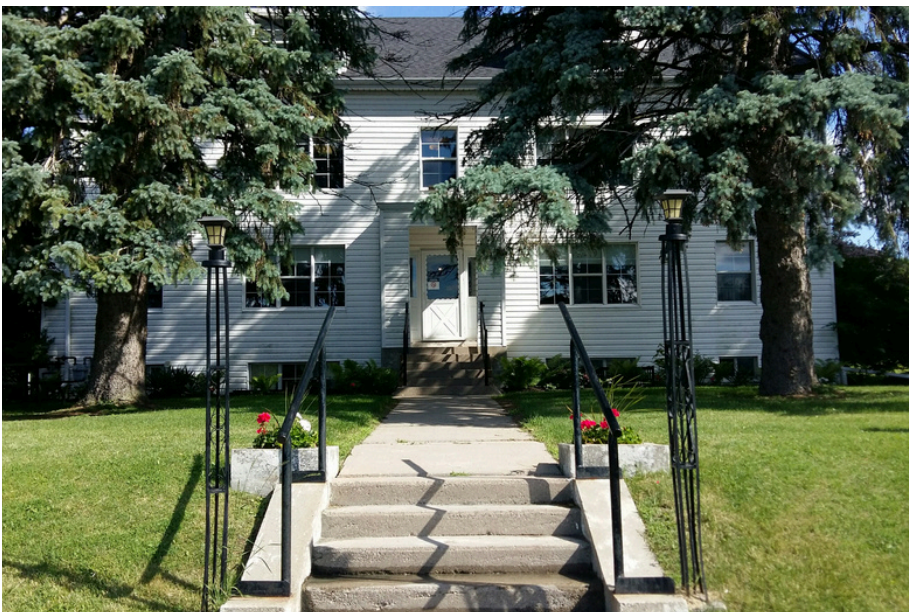
# 2022-2024 Monthly Electrical Usage

Month	2022	2023	2024
January	133,205	132,931	140,977
February	118,270	123,367	132,683
March	129,503	139,623	144,363
April	128,932	138,249	145,047
May	165,450	153,366	176,371
June	178,914	173,036	188,962
July	207,434	199,395	209,389
August	213,040	183,637	193,719
September	172,101	163,592	170,158
October	152,585	159,342	162,298
November	141,271	140,901	145,963
December	136,833	138,238	145,174
<b>TOTAL</b>	<b>1,877,539</b>	<b>1,845,678</b>	<b>1,955,103</b>



# 2022-2024 Monthly Electrical Usage

Commodity	2022	2023	2024
Ambulance Garage	7,940	4,732	N/A
Mary McGill Building	3,080	3,249	3,312
Main Building	370,867	339,497	329,884
<b>TOTAL</b>	<b>1,877,539</b>	<b>1,845,678</b>	<b>1,955,103</b>



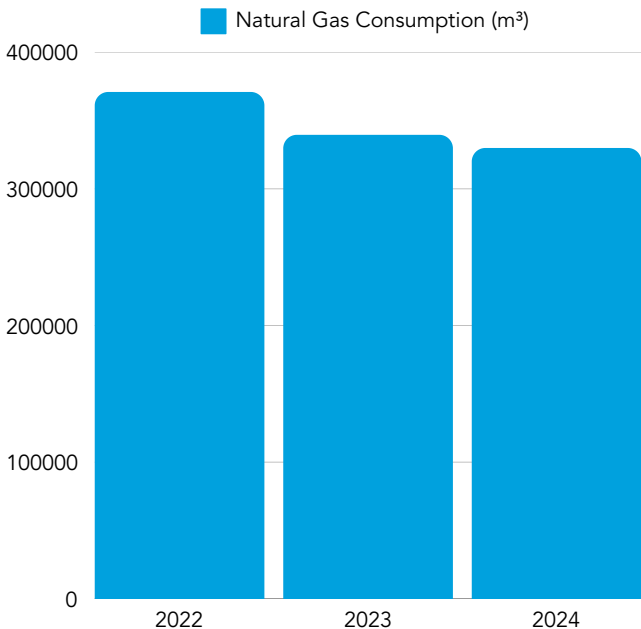
In November 2023, the Mary McGill building was demolished as part of our ongoing redevelopment efforts. As a result of this major change, 2024 energy usage data for the building is unavailable for this report.

We are actively working on new energy metrics that will reflect the evolving landscape of our campus, and we look forward to providing updated figures in future reports.



# 2022-2024 Natural Gas Consumption

Year	Natural Gas Consumption (m <sup>3</sup> )
2022	370,867
2023	339,497
2024	329,884
<b>TOTAL</b>	<b>1,040,248</b>



At SMH, there has been a steady decrease in natural gas consumption over the past few years. In 2022, the total consumption was 370,867 units, followed by a reduction to 339,497 units in 2023. This decline continued into 2024 with a consumption of 329,884 units.

Overall, the total natural gas consumption for this period is 1,040,248 units.

**Compared to 2022, natural gas usage has decreased by approximately 11.1%, reflecting ongoing efforts toward energy efficiency and reduced reliance on fossil fuels.**

The window replacement project completed in January 2024 has significantly contributed to reducing natural gas usage in the hospital by improving insulation and energy efficiency.



# Closing Statement

08

In conclusion, Stevenson Memorial Hospital remains committed to sustainable energy practices and continuous improvement in our energy management. Through the ongoing reduction in natural gas consumption and the implementation of energy-saving initiatives, we are making significant strides towards minimizing our environmental impact.

These efforts not only contribute to a greener future but also support our goal of providing high-quality care while maintaining operational efficiency.

We will continue to monitor, adapt, and optimize our energy usage to ensure that Stevenson Memorial remains a responsible and forward-thinking healthcare provider.

The future is bright at Stevenson Memorial Hospital.



# Thank You



## Contact Information



[stevensonhospital.ca](http://stevensonhospital.ca)



200 Fletcher Crescent, Alliston,  
Ontario, L9R 1W7



[communications@smhosp.on.ca](mailto:communications@smhosp.on.ca)